

Tablet Use as a Paper Log in Case of Malfunction

Quick Reference Card

This quick reference card describes the use of the driver's tablet as a paper log in case of an ELD malfunction event.

Process

1. Note the malfunction of the ELD and provide written notice of the malfunction to the motor carrier within 24 hours.
2. Reconstruct the record of duty status (RODS) for the current 24-hour period and the previous 7 consecutive days and record the records of duty status on graph-grid paper logs, or electronic logging software (HOS App on the tablet), that comply with 49 CFR 395.8, unless the driver already has the records or retrieves them from the ELD.
3. Continue to manually prepare RODS in accordance with 49 CFR 395.8 until the ELD is serviced and back in compliance. The recording of the driver's hours of service on a paper log, or electronic logging software, cannot continue for more than 8 days after the malfunction; a driver that continues to record his or her hours of service on a paper log, or electronic logging software, beyond 8 days risk being placed out of service.

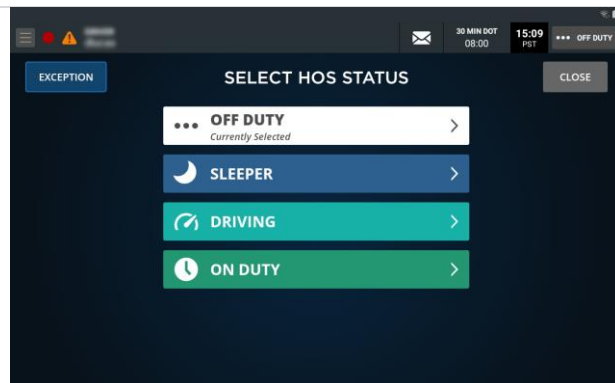
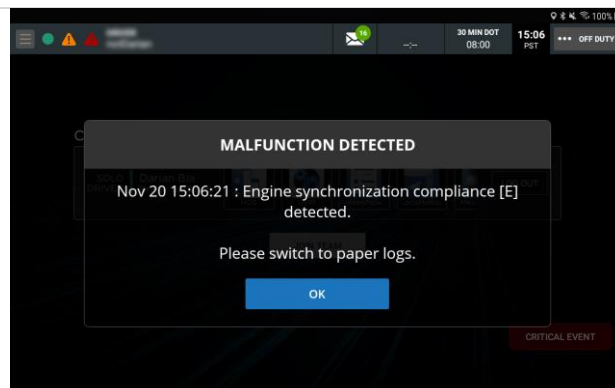
Tablet Use as a Paper Log in Case of Malfunction

The Platform Science HOS Application detects malfunctions and displays this modal.

The HOS App instructs the driver to "Please switch to paper logs."* Drivers continue to use the tablet as an ELD.

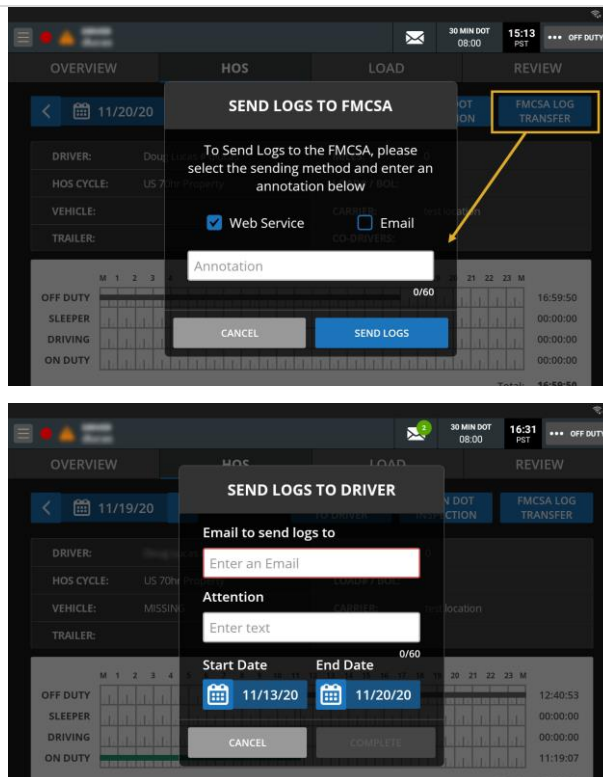
* Records can be recorded to electronic logging software that comply with 49 CFR 395.8.

Driver selects duty status manually using the HOS App.



If tablet has cell connectivity (via SIM card or other WiFi service), drivers can continue to send log records to FMCSA and/or to an email account.

Also, if there is cell connectivity, log records will continue to sync with Platform Science server.



Copyright 2020, Platform Science, Inc. All Rights Reserved.

No part of this publication may be reproduced, transmitted, transcribed, stored in a retrieval system, or translated into any language or any computer language, in any form or by any third party, without the prior written permission of Platform Science, Inc.

The information and/or the products described herein are protected by the laws of the United States and/or other countries, including their laws on trade secrets, patents, trademarks, and copyrights. All information herein is subject to change without notice, and Platform Science, Inc., hereby disclaims any express or implied warranties with respect thereto. Platform Science, Inc., its affiliates and vendors shall not be liable for any damage caused to its products or any injury suffered by any person, either directly or indirectly, as a result of the use or repair of its products outside their intended use.

Platform Science is a registered trademark of Platform Science, Inc. in the U.S. and/or other countries. All other trademarks are the property of their respective owners.